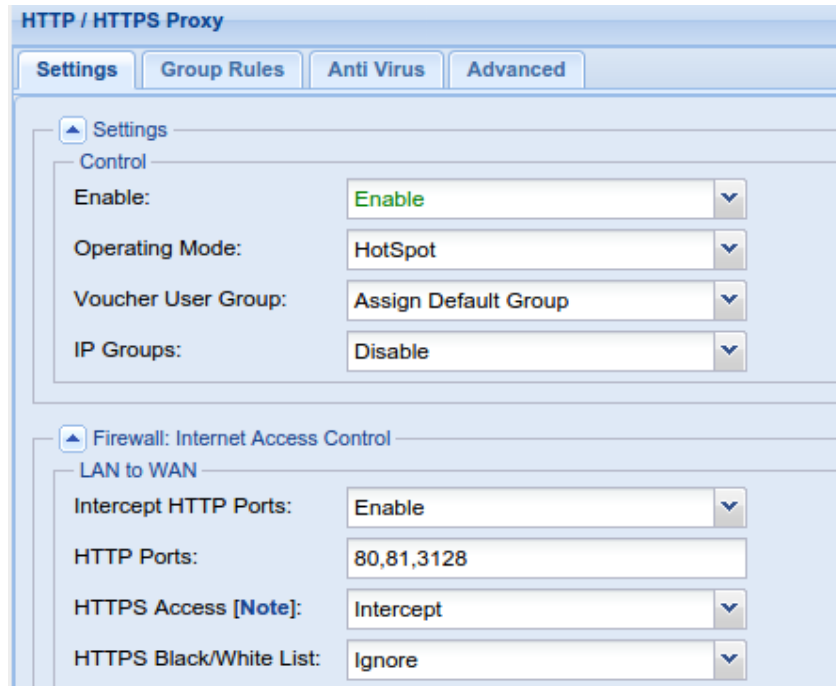


Block access to consumer accounts

1. Login to Firewall
2. Click on Configuration
3. Click on Web security
4. Select HTTP/S Proxy
Select Intercept Mode under HTTPS access



- Click on [Note] tab to download the root certificate
Follow the instruction given in Installation steps to upload the certificate in all LAN machines

5. Go to Web Security
6. Click on Group rules
7. Select Global Settings
8. Select Public Networks
 - Enable Google Apps
 - Enter the business domain name

